

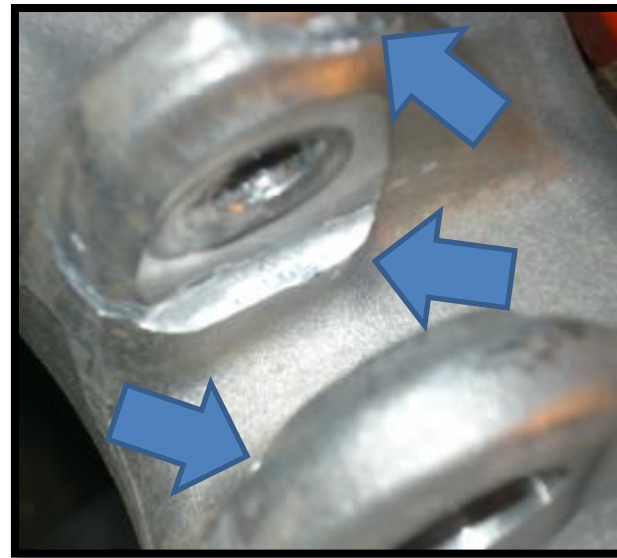
KTM FREERIDE 250-300 PDS & KTM 85CC-105CC PDS INSTALLATION INSTRUCTIONS



REFERENCE: STOCK SETUP



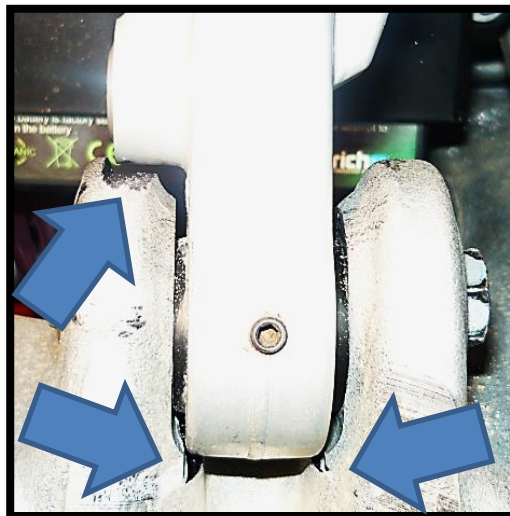
REMOVE SPRING. ROTATE SWINGARM.
MARK SHOCK FOR MOVEMENT LOCATION



GRIND CLEARANCE AS SHOWN
MAKE SURE TO GET 2MM CLEARANCE



REMOVE HEIM JOINT, INSTALL SYNERGY X-BUSHING
DRILL AND TAP M5 X 0.8 THRU SHOCK BODY, INDENT
BUSHING. SET SCREW WILL LOCK ONTO X-BUSHING



DOUBLE CHECK WORK FOR A CLEARANCE
OF 2MM MINIMUM

SETTINGS:

1. FIRST, MAKE SURE RIDER SAG IS SET ACCORDINGLY PER FACTORY SUGGESTIONS.
2. WITH A CLEAN SHOCK THREAD AND BOLT, ADD GREASE TO THE SHANK OF THE OEM BOLT. ADD A FEW DROPS OF RED LOCTITE TO SHOCK THREAD. INSERT BOLT AND TORQUE TO APPROX 10 FT/LBS. DO NOT OVER TIGHTEN, BUSHING WILL BE BOUND ON SIDES. IT NEEDS TO ROTATE WITH SHOCK NOT IN THE SHOCK! LET STAND 24 HRS.
3. KEEP BUSHING CLEAN AFTER MUDDY RIDES AND KEEP BOLT GREASED WITH WATER PROOF GREASE
4. REPLACEMENT BUSHINGS ARE AVAILABLE AT WWW.SHOP.SYNERGYSEALS.COM OR CALL 209-938-9726 TO ORDER OVER THE PHONE